

A MODEL HOME MAY BE HAD AT

Why The Model Home? It Is A Fair Question

There are those who are undoubtedly interested in the why and wherefore of Model Homes. The newspaper sponsoring Model Homes is a new feature throughout the country but already has been received with great popularity in every community where it has been done and has greatly stimulated the sales and building of houses in and around the community.

Manchester is a town of model homes as a whole and probably there is greater interest in the town than in many towns and cities a great deal larger. It is a big asset to any community to have this spirit for it means a stabilized population who are interested in their homes and community.

The Local Project
The Herald Elizabeth Park Model Home is being developed in the interest of home builders throughout the town, and during its construction and after its finish, it is hoped that it may be of real benefit and inspiration to any who are in doubt as to what they would like for their own home and need only an idea of some sort to complete their plans. There are many instances where previous to letting the contract a couple will study numerous plans and tour about the town in which they live and surrounding cities and towns viewing different types of houses.

Of course, for the most part, those that they see, especially out of town, are viewed from the outside and they have only a faint idea as to the arrangement of the rooms within. Many houses with a beautiful exterior make a very creditable showing, but their interior arrangement is far from pleasant and satisfactory.

In this day and age of conveniences and the cutting of time by labor saving devices, the average woman is anxious to spend as little time as is necessary doing the work about the house and it is essential that the arrangement of the house be as well planned as it is possible to make it.

Splendid Arrangement
In the Herald Elizabeth Park Model Home, it is believed that this type of house offers as good an arrangement of space as it is possible to get in a house of its size. A

large number of plans were studied thoroughly and a number of houses were visited in town and out of town. In the case of the houses visited, the exterior was given careful consideration and fortunately it was possible to see the interior of many of these houses. In that way the best possible features of all of them were embodied in the Elizabeth Park Model Home.

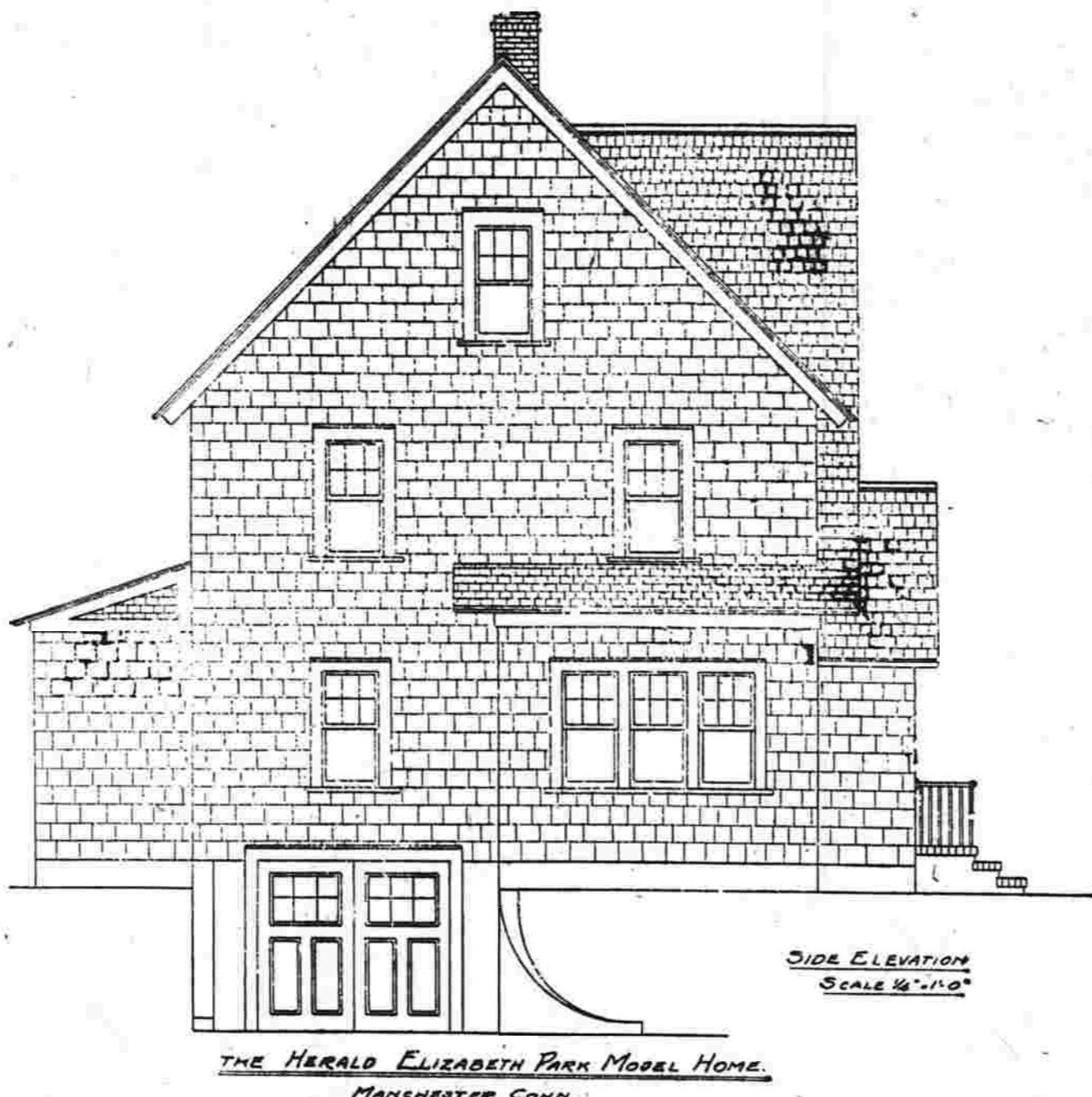
Of course there are hardly any two people or more who have quite the same ideas on house construction and undoubtedly there are some little changes that could be suggested by some folks after they see the building completed, but it is well to remember that these same people would probably be unable to make any such suggestions if judging by plans only. After all it requires some foresight to be able to read plans correctly and picture in one's mind what they will produce in the way of actual construction.

Plan Reading
In the matter of plan reading there are many who see a thing on paper drawn to scale and say it looks fine and agree that everything is the way they want it, but in a short few weeks after a plan has been executed in the rough with no finishing done, they will turn about and tell the contractor that it does not appear in any way as it had in the plans. In a great many cases it is simply a matter of inability to picture the plan as it will be carried through in actual construction.

Other Factors
There are many other factors in building a new home that are overlooked by the owners either because they do not know or do not take the time to give thought to these various smaller problems. The work of every sub-contractor is just as important as that of the general contractor, for if the work of any one of these men is not perfect or not up to the standard of the rest of them, there is a flaw in the finished product. In order to insure a complete and thoroughly satisfactory job from start to finish every sub-contractor must do his work according to plan and specification and see that the details are executed.

The discussion of model homes will be continued in next week's issue.

Garage In The Basement Is A Feature In Herald-Elizabeth Park Model Home



THE HERALD ELIZABETH PARK MODEL HOME, MANCHESTER, CONN.
DESIGN BY STATE TRADE SCHOOL - ST. MANCHESTER, CONN.

This week's illustration shows the east elevation of the Herald Elizabeth Park Model Home, showing the basement entrance to the garage. This feature has been incorporated in the model home because it is believed that today it is one of the most popular ideas for small homes that there is going. It represents a saving from quite a number of angles. First, it does away with the independent garage, which as a rule is without source of heat

and if heated, must be done so by an independent heating system, or if heated from the house heating system, must be done so at considerable expense. It also means that the owner's car is very convenient and accessible to the rest of the house, which is an especially satisfactory arrangement in the winter time, meaning less shoveling, etc. It also means that home owner has more room on his plot for other purposes.

Of course this type of garage in the basement cannot be incorporated in every home because the property is not situated such that it can be worked out successfully. However, there are many places in this rolling New England country where houses are constructed on property that rises from the street or drops away from the street, and in either case this basement plan can be carried out.

task of scouring is ended. The same advantages hold good in the laundry tray. The long life and unmarred beauty which it adds to the bathtub are also creating a wide demand for this new enamel.

COME HITHER, EH!
"I smiled at a girl last night, and as she passed she gave me a smile in return."
"What followed?"
"I did."—Everybody's Weekly.

STUCCO FINISHES OF REAL BEAUTY

Many Color Combinations and Numerous Textures Available—How Work is Done.

Every home builder has certain ideas which he wishes to carry out in building his home. He wishes it to be individualistic in appearance, permanent and fireproof. And above all, he wants his house to be beautiful. Architects and craftsmen have made it possible, by developing a variety of colors and textures, for the home builder to put his ideas into effect through the use of Portland cement stucco.

Few people thoroughly understand the possibilities of stucco, especially from the standpoint of color and texture. Through the use of this material it is possible to obtain any desired color, and through delicate combinations of shades and textures, many beautiful effects can be produced. Architects may now paint in water colors on their plans the colors which will later be accurately reproduced in stucco.

By a careful selection of color and texture, the home builder of to-day can have practically and stucco finish he wishes on his house. The day when stucco coloring was limited to shades of gray and textures were designated as "smooth" or "rough," is past.

In color, stucco may be buff, tan, cream, brown, gray, white, ivory, yellow, red, copper—in fact, any shade or tint which can be produced with pure mineral oxides, which give permanent color tones, or with any blended combination of these various colors.

Textures in common use in this country are numerous. Among the more popular are the Spanish with its wavy, trowel-marked finish; the Mexican, with its smooth, uneven surface; the troweled, stippled finish of the Italian texture; the Colonial with its smooth, sand-floated surface; and the modern American with its soft, tapestry finish, as well as almost unlimited modifications of any of these.

Because of the many ways in which it can be used, home owners have also adopted stucco for interior wall treatments. By selecting suitable colors and appropriate textures, the builder can adapt the material to inside rooms as well as to outer walls. The variety of artistic possibilities of stucco in modern use is rapidly being appreciated by both the building professions and the home owner.

IN GOOD SHAPE

ACTRESS: I'm so afraid I'll forget my lines.
PRODUCER: Never mind little girl, the audience won't.—Life.

BEAUTY OF PLUMBING FIXTURES PROTECTED BY ENDURING FINISH

Acid-Resisting Enamel Does Not Mar, Chip or Show Fruit and Mineral Stains.

During the last few years industrial artistry has not alone given new beauty in plumbing fixtures for the home, but has afforded it with beauty new protection which insures its endurance. One recent achievement is, in acid-resisting enamel which far surpasses any former that in its quality of being impervious.

Under the most severe tests it has demonstrated that fruit and vegetable acids, strong cleaners, have no effect upon it. It withstands any amount of vinegar or lemon juice spilled upon its white surface. The minerals in the water, ink, even iodine, cannot stain it.

5 1/2 to 6 PER CENT
Money to loan on First Mortgage on Real Estate at above rates. Completed and Construction Loans.

Our loaning representative is in Manchester each week.
THE LOMAS & NETTLETON CO.
125 Trumbull St., Room 206 HARTFORD

Build With Glastonbury Granite

Recognized by leading architects as high grade Building Stone.
Many of the best builders are using it.

Beautiful in appearance and does not wear out.
A Home Product Quarried in Glastonbury.

W. A. Strickland
Manchester, Phone 506

Watch This Space
Hillhouse & Taylor
Willimantic, Conn. Tel. 161
Interior Trim

Your Savings Account and A Home Of Your Own

By the time the average young man or woman plans to get married, a savings account started early in life, will be of a worthwhile amount. It may be a determining factor in the purchase of a home of their own a few years later.

The Savings Bank of Manchester
South Manchester, Conn.

"Do It Electrically in Your New Home"

THE AUTOMATIC ELECTRIC WASHING MACHINE



Here is a popular priced washing machine with an all copper tub that can come within the budget of any average family.

It is well constructed throughout and will hold as large a washing as any other type machine. You owe it to yourself to have a demonstration in your home.

This machine will be on demonstration in the Model Home.
Price \$99.50

The Manchester Electric Co.
773 Main Street. Phone 1700

HEATING SYSTEMS NOW CERTIFIED

Many Factors Enter Into Large Proportion of Failures of Original Systems.

By M. E. DURKEE
(Manager Certified Heating, Heating and Piping Contractors' Newark Association.)

The statement was recently made that "70 per cent of all original heating installations are unsatisfactory." One may rightfully ask "Why the large percentage of poor results?" There are many factors which contribute to this condition, but we believe the principle one is the absence of standards or some method which would enable the owners, or others, to specify and recognize with certainty a proper heating installation.

During the last few years there have been many new conveniences, including several new types and systems of heating equipment, made available for the home; thus one about to build is confronted with the problem of selecting such features as will contribute most to the lasting health, comfort and happiness of the home. This being a day of varied and specialized activities few have a general knowledge of building, therefore those about to build will find less worry and difficulty, and the results will be far more satisfying if they specify work done by a responsible heating contractor. This procedure will insure the best economical balance between a well built house and proper heating. While this may require a curtailment in some other features of the home which are less important, it will be found that the dividends paid on the additional investment in good, sound construction and proper heating will encourage the later addition of many attractive features. Furthermore, the original investment in good construction will prevent the yearly expense of repairs and maintenance resulting from cheap construction.

In the early days of radiator heating, when building construction was comparatively simple and well standardized and prices of materials and workmanship were far cheaper, competition was not great and the owner had little reason for complaint concerning his heating plant. At least he was not concerned to any great extent over his fuel consumption, for this was comparatively cheap. However, at the present

time there are many types of construction, several systems of heating and very keen competition existing between the manufacturers of the various equipments, and also between the various contractors, entering into the construction. For this reason there are very many factors to which one about to build or to buy should give careful consideration. For example, consider the following, which are some of the most important points affecting the heating installation.

Insulation Big Factor
A well constructed and insulated building will give off less heat than one which is cheaply constructed and without insulation. Also a building located in the open, exposed to the winds, will require more to heat than one in the city, which is sheltered. What of the windows? Are they carefully fitted and equipped with weather strips? If so, the heat loss will be less than without this equipment. Another most important item which appears to be given too little consideration these days is the chimney. For any particular building the chimney must be a certain height and with a certain cross-section to give the most economical operation of the heating plant.

LET US DO THE EXCAVATING AND GRADING FOR YOUR NEW HOME
We have the facilities and experienced men to supervise the work.
Excavating and grading for Model Home being done by us.
L. T. WOOD
55 Hissell St. Tel. 496

H. W. Hollister
268 Woodland St. Phone 1703
We Raise Them— We Move Them— We Shore Them— We Wreck Them—
BUILDINGS

See the Beauty and Style Wrought in
YALE HARDWARE
Yale hardware is wrought in enduring styles that will always be keeping with your home. Yale solid brass and bronze fixtures are perfection in themselves. Specify Yale products throughout for your new home.
Manchester Plumbing & Supply Co.

GEORGE FORBES
General Contractor and Builder
Herald-Elizabeth Park Model Home
40 Delmont Street, Phone 907, Manchester

The Harlan's New Home
Mother Gives Her Advice
Regarding Plumbing and Heating
"Dad! Neither of us understand plumbing and heating any more than any other construction. It's my opinion we call for competent advice."
Johnson & Little
Plumbing and Heating Contractors.
13 Chestnut Street. Tel. 1083-2

GENERAL ELECTRIC Refrigerator
Even the best food has bacterial content that multiplies rapidly at temperatures above 50 degrees. If your refrigerator doesn't keep several degrees below the 50° danger point, your health—and the health of your family is being endangered. The only way to be sure that you are eating healthfully fresh food, is to take your refrigerator's temperature. The General Electric Refrigerator averages 42 degrees under normal household use.

M. H. STRICKLAND
665 Main Street, Phone 265, Rialto Theater Building South Manchester

Home Builders' Hints
by **W. G. Glenney Co.**
Shingles
Neponset Fire Resisting Shingles make a roof of lasting beauty and endurance. They come in all colors and styles. Fire insurance companies give them a high rating. Give your new home this protection.
We also have a full line of cedar shingles in various grades.

Electrical Contracting
We are prepared to give you service on all kinds of electrical work. Call us in when you're ready.
We Can Supply Fixtures for Every Room in Your Home.
If the fixtures in your present home are old let us replace them with new ones.
Electric Wiring and Installation of Fixtures in Model Home Will Be Done by
Johnson Electric Co
29 Clinton St. Tel. 657-4

The W. G. Glenney Lumber Co.
Manchester. Phone 126

Protect the Surface of Your New Home. When Painting Use Good Paint
Painting must be done to protect the woodwork from deterioration—both inside and out. The outside of course is subject to the worst wear due to the elements. In view of that fact it will pay you to use the best paint and have it applied by competent workmen.
JOHN I. OLSON
Painting and Decorating Contractor.
699 Main Street, Johnson Block, Tel. 1400

Edison Portland Cement Lime, Plaster and Chimney Tile
In Any Quantity for Your New Home.
And When Your Home is Finished We Can Supply You With Coal and Fuel Oil.
G. E. WILLIS & SON, INC.
2 Main Street, Phone 50, Manchester

A MODERATE PRICE. BUILD NOW

Sheet Metal Work In Heating Jobs

By MARTIN B. FOSTER (Courtesy Building Age)

It is not infrequently that the success or failure of a warm-air heating system is due to the care or lack of it with which the plant and its sheet metal ducts have been designed and installed. Hence builders who handle ready-equipped homes may do well to familiarize themselves with approved methods of installation. If sheet metal installers make a botch job of it and leave the heater and ducts improperly installed it is usually the contractor who receives the blame rather than the artisan responsible.

The proper setting of a furnace appears simple enough, yet numerous are the cases where heaters have tilted out of plumb after having been fired for a month or two. As in laying any foundation, careful preparation of the base material represents the chief requirement for permanent stability. When a heating plant has been unevenly placed, casings will pull apart after the plant is started. Doors refuse to fit and leakage occurs through tiny cracks in the connecting sheet metal casing, pipes and bonnet. Dust from the ash pit fills the basement and usually a large quantity finds its way back into the heating plant to be delivered to the rooms upstairs through the heat registers. Leakage of heat into the cellar often makes this the warmest room in the building.

A permanently level warm-air heater can be secured by mounting it on a brick foundation topped with concrete. The base of the casing should be bolted to the floor. Cracks may then be filled with furnace cement. An ordinary level will show whether the apparatus needs building up at certain points. For best results it would be well to extend the concrete foundation about 3 feet on all sides beyond the casing.

After bolting together of the casings of the freepot, dome and radiator has been completed, the cold-air duct and bottom sections of the casing are placed in position, with the air supply opening at the back whenever possible. The points should be lock sealed and absolutely tight at all points, otherwise dust will be drawn into the air supply, later to be passed up to the rooms to be warmed. Leaks in the cold-air duct must be avoided because many complaints arise from furnaces can be traced directly to leaking ducts.

It is a grave mistake to attempt to make the air-supply too small for the sole purpose of securing additional heat. A smaller air-supply no heater can furnish more warm air than has been supplied through the cold-air duct. Air expands, roughly, about 30 per cent in being raised from zero to 70 deg., hence if all outside air is to be used the cold-air duct may be about 80 per cent in area of the total area of the heater pipes. If recirculated air, or partial recirculation, is to be used it is best to make the air-supply duct equal in area to the combined areas of the heat ducts. Modern practice recommends recirculated air, as this provides for the withdrawal of cool, floor-level air and enhances circulation of heat.

As the cold-air duct is subjected to abuse from storing objects upon it and knocking against it, it is advisable to make this of heavy sheet metal. Galvanized iron, 26 gauge, offers strength and rigidity and its protective coating the zinc makes the metal anti-corrosive so long as the coating remains intact. If peeled off in spots a little metallic paint restores the surface.

Furnace casing design has occupied the active attention of heating engineers for many years with the result that these are now made double in practically all makes of heaters. That is, there is an inner casing an inch or two distant from the outer casing and extending from the top ring to the grate level. The object sought is maintenance of a film of cool air next to the outer casing to act as insulation, thereby lessening radiation of heat to the cellar and rendering

the outer metal sheeting cool to the hand. Incidentally, should the casing be hot to the hand the system is not working efficiently. Inner casings are of thin gauges, either tin or iron, because strength is not required. The outer casing, on the other hand, must be of strong material to resist denting and corrosion. Galvanized iron of not less than 26 gauge is the material in most common use. Insulation with air-cell asbestos renders better results from a heating standpoint, but few owners will permit the expense of having insulation installed.

EXCESSIVE TESTS GIVEN MATERIAL

Show Walls Capable of Bearing Thrice Weight Estimated; Heat-Retention Proven.

Speaking before the last convention of the makers of common brick in Washington recently, Dr. George K. Burgess, director of the United States bureau of standards, highly complimented the brick manufacturer upon their enterprise in making a comprehensive study of the scientific phases of their product. Recently nearly 200 tests have been made at the bureau of the physical qualities of common brick and brickwork.

These have developed more than has ever been known scientifically of the various qualities of this aged-old building material. Brick, Dr. Burgess declared, had always been penalized by engineers and architects, because they had no definite knowledge of its load-bearing strength, its absorption of moisture and its liability to damage from freezing, or its conductivity of heat or cold. So the engineers and architects always played safe by imposing excessive requirements.

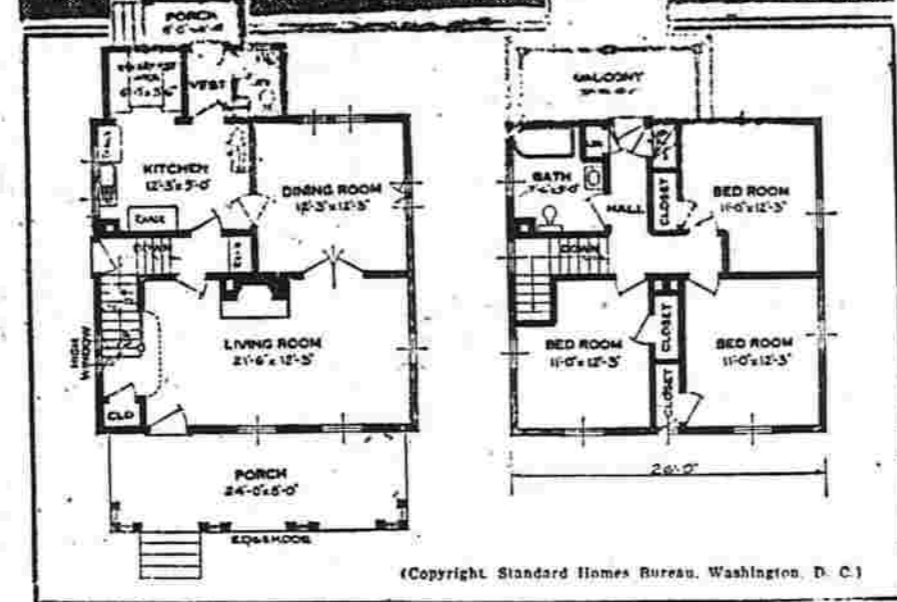
These tests have developed that the average brick wall has always been capable of bearing two or three times the weights they were calculated to support. They have developed that the danger from absorption of moisture and consequent danger from freezing temperatures is altogether negligible and that they lose far less heat than the engineers have been estimating. No other material equals them in fire resistance.

Further tests are to be made upon different types of walls to determine definitely the various qualities which weigh heaviest with the engineer and the architect. The findings will be reported by the bureau as rapidly as the tests have been analyzed. They will give the common brick a new value as a building material in the eyes of the world.

And that is promising considerable when a material has been in more or less extensive and constant use for more than 6,000 years.

Brick Homes Win Favor Inevitably the home most in favor is a quarter century to come will be the home of brick, common brick at that. Material costs have greatly increased during the last ten years and lumber, the nearest competitor of brick from that standpoint, has advanced more than any of them. It is destined to continue so as the forests become more and more depleted and farther removed from the points of consumption.

House Plans That May Interest You NO. 3—"THE EDGEMOOR"



The Edgemoor preserves the American tradition of simplicity and thrift.

For it is utterly simple in its lines, with no extra decorations to spoil it. And every inch of space is utilized to the best advantage. In the Edgemoor we find the kind of roomy front porch that is associated with former days, when staying at home was the rule, not the exception. The front door gives hospitality onto the long living room. Entering, one sees first of all the cheery fireplace.

The Edgemoor, in accordance with American tradition also, furnishes its owner every conceivable convenience in its cozy kitchen.

breakfast nook, roomy built-in cabinets, closets for brooms, ironing board and so on. Off the kitchen is a lavatory and outdoors a little porch to rest where a breath of air may be snatched. Ventilating windows on the third floor ensure cool bedrooms for hot summer months. There are three quite sizable rooms, each with a closet and off the back hall a balcony.

The cost of the Edgemoor is from \$4,000 to \$6,000.

For further information, please write the Standard Homes Company, Colorado Building, Washington, D. C.

PLYWOOD HAS STRENGTH

Douglas Fir plywood is available in wide width and long-lengths, for paneling, for lining of walls, ceilings and closets, and for many other useful purposes. This material is made up of thin sheets of wood bonded together under hydraulic pressure with water-resistant adhesive and it will not warp, check, expand or contract.

We Do All Types of GLAZING

AUTO GLASS AND WINDSHIELDS A SPECIALTY

BAMFORTH'S Johnson Block, South Manchester

PLUMBING and Heating Advice For Home Builders

by "Joe" Wilson

Experience

You know that you may have a great deal of theory but it's the actual experience in doing the work that counts. Our abundance of experience and knowledge of plumbing and heating problems is at your service at all times.

JOS. C. WILSON Plumbing and Heating Contractor.

28 Spruce St. Tel. 641

Complete Foundation At The Model Home

The third week of the work on The Herald Elizabeth Park Model Home finds the forms of the basement walls all finished and the concrete poured. The forms are now being stripped and backfilling around the foundation will start at once so that the carpenters under the direction of George Forbes the general contractor can start work on the framing. Paul Brandt, the concrete contractor made a record in pouring the foundations. The concrete is dense and well compacted making tight walls.

The Manchester Water Co. has a force of men at work installing water mains in the tract. Work was started at the beginning of the Henry street extension. A six inch cast iron main is being laid and this will provide adequate water supply for all the houses that will be erected on the tract and will also provide for fire purposes. The extension of other public utilities into the tract will be forthcoming in a short while.

Robert J. Smith, owner of Elizabeth Park and also a well known fire insurance man pointed out a fact in connection with the construction of the Model Home that is probably not widely known, namely the regulations regarding a garage in the basement of a dwelling house. Up to a few years ago the fire insurance companies were not in favor of the idea of having this arrangement and insisted on having any basement garage cut off from the remainder of the house by fire-resisting walls, or charging a higher rate of premium. Now they have changed their policy and the rules and regulations permit a home owner to keep up to two cars in the basement of his house without any additional premium.

Every Home Should Have One of the NEW MAJESTIC A. C. Consoles

Barstow's Radio Service

20 Mid. Tpk., Phone 1068

EDWARD HESS

Headquarters for Fine Electrical Fixtures for Your New Home

Also a Complete Line of Plumbing Fixtures.

555 Main St., South Manchester

Concrete Foundation for Model Home and Concrete Sidewalks in Elizabeth Park

Constructed by PAUL BRANDT

MASON CONTRACTOR

Ashworth St., Phone 2012, South Manchester Concrete Block Factory, Wetherell St. Phone 772-3

"Good Buildings Deserve Good Hardware"

The Ideals Of Two Centuries Reproduced In Corbin Hardware

With the revival of great interest in Colonial and Early English type houses Corbin has introduced a distinctive line of hardware that is truly characteristic of these two periods. All this type of iron hardware has been protected against rusting by a new finish called Colonium. It prevents rusting, pitting and discoloration of the woodwork.

THE F. T. BLISH HARDWARE CO

57 Bissell Street, Phone 1488

"Do It With Gas—The Economical Fuel"

Cooking In The Home

The desirability of gas for cooking purposes in the modern home of today is evidenced in the constant demand for the extension of our service mains. The housewife of today recognizes the economy and excellence of gas heat. For home use we recommend the famous Glenwood range.

Phone 1100 As We Employ No Solicitors

C. E. Wilson & Company, Inc. Manchester

Offices and Packing Cellars ALLEN PLACE PHONE 1100 Nurseries 302 WOODBRIDGE ST.

STEEL CASEMENTS GIVE WIDE RANGE OF DESIGN

Steel casement windows offer architectural harmony with any of the period and modern house designs now so popular in this country. In the wide range of standard sizes and combinations which may be effected with standard sizes, all types of window effects, or as the architects call them, fenestration, can be achieved, ranging from small quaint windows for closets entries to large studio windows for the high ceilinged living room. Color may be added to the exterior of the house by means of colored putty which emphasizes the small outside-glazed panes of the steel casement. Small leaded designs, in the form of a cartouche, or medallion, are inexpensive and easily available, and placed either in a center pane or at the corners of the window give an unusual touch of interest.

Double contact weathering, on the improved type of steel casement, employs the air cushion principle, familiar to engineers, to insure weather-tightness and obviates the need for weatherstripping. Any air penetrating the first contact between frame and sash loses its force before striking the second contact, giving complete freedom from air currents at the junction of frame and sash.

JOHN MAHONEY

60 Maple Street. Phone 394

Mason Contractor For The Model Home

Plastering Fireplace Work

John J. Flavell

Plumbing and Heating Contractor

Estimates Cheerfully Given on All Types of Work.

Every Home Should Have One of the NEW MAJESTIC A. C. Consoles

Barstow's Radio Service

20 Mid. Tpk., Phone 1068

Use Large Enough TIMBER

for all load bearing parts.

Our materials, large and small, are selected with care to insure the best grades.

Long experience and excellent facilities combine to make this an outstanding establishment.

The MANCHESTER LUMBER CO.

Phone 201, South Manchester, Conn.

FLOOR SURFACING

Floor Surfacing for the Model Home Will Be Done by

H. W. ALLEN South Coventry, Conn. Phone Willimantic 366-2

WALTER KOHLS

Plumbing and Heating Contractor

Tinning and Jobbing of All Kinds a Specialty. Good Plumbing and Heating for Modern Homes.

New Shop Now Open at 107 Spruce St. South Manchester (Formerly Sam Moore's Shop.) PHONE 2656 Residence 58 Academy Street.

The Model Home Will Be Painted and Decorated

by JOHN CLOUGH

Painting and Decorating Contractor

90 East Center St. Phone 1183-2, South Manchester

Garl W. Anderson

Member GUARANTEE This association guarantees the work of its members and will adjust without charge any complaint regarding defective workmanship or materials, or overcharge.

Membership in this association is open to all Master Plumbers or Heating Contractors who will conform to its standards of practice. 57 Bissell Street, Phone 1488

Garl W. Anderson

Plumbing Heating & Jobbing

Contractors for Plumbing and Heating in the Model Home.

57 Bissell Street, Phone 1483

**TWO POSITIONS OPEN
TO SOUTH END P. O.**

**U. S. Civil Service Commission
Gives Notice of Competitive
Examinations.**

The United States Civil Service Commission will hold an open competitive examination for the positions of clerk and foot carrier in the post office service in South Manchester, Conn.

Regular positions with full time service are seldom filled by direct appointment from eligible registers. Eligibles are first appointed as substitutes and are required to be available to render service whenever needed. Vacancies in the regular force are filled by the promotion of the senior substitutes. The salaries for regular employees range from \$1,700 to \$2,100 per annum. These positions are permanent during good behavior. Retirement on an annuity is provided for at 65 years of age or in the case of total disability. Compensation during disability for injuries received in the service is allowed and annuities are given to dependents in case of death as a result of such injury.

Fifteen days' vacation will full pay is allowed with an addition of ten days' sick leave with pay.

For further information address the Secretary of the Board of United States Civil Service Examiners at the post office named above, or the District Secretary, First United States Civil Service District, Custom House Tower, Boston, Mass.

As the receipt of applications will close on August 3, 1928, they must be filed with the district secretary at Boston on or before that date.

PUBLIC RECORDS

WARRANT DEEDS

W. Harry England to Zella Richardson land and building on Lydall street.

Casper and Rose Sastella to the town of Manchester, a small tract of land lying between Birch street and the East cemetery.

LEASES

Abraham Orenstein to Samuel Abramson and George D. Edwards, land known as 131 and 133 Oak street, a junk yard, for a period of two years.

Harry Mintz to the Atlantic and Pacific Tea Company, the store at 33 Oak street for a period of ten years.

Harry Mintz the store now occupied by the A. & P. Company on North Main street and one being added to it, for use as a grocery and meat market; yearly rental \$2,400.

BOW-BACKED

SHE: Gracious! Just look at that man's chest development.
HE: Chest development, nothing. He got that bulge from patting himself on the back.—Life.

HEBRON

At the close of the morning service at St. Peter's church or about 12 m. on Sunday, June 30, the remains of the late Mrs. Elizabeth (Whittlesey) Phelepa Birdsey, of Hebron and Meriden, will be interred in the family lot in St. Peter's cemetery. A committal service will be said by the Rev. T. D. Martin. Relatives and friends are asked to spread the notice. Mrs. Birdsey was the widow of the late Edwin Birdsey of Meriden and the daughter of the late Mr. and Mrs. David Phelps of Hebron. She was a native of Hebron and lived here much of her life. She died while at the home of her nephew, Dr. Benjamin H. Bissell, in Los Angeles, California, a year ago this month, funeral services taking place in that city and the cremated remains being brought east this summer for interment.

Mrs. Gertrude Hough entertained the woman's bridge club at her home Wednesday evening. Miss Chas. P. Pendleton was the winner for the evening.

Quite a delegation from the Ladies' Aid Society of the Congregational church went to Westchester on Thursday in response to an invitation from the Westchester Ladies' Aid Society to partake of a strawberry festival supper served in honor of the Hebron ladies.

Farmers are beginning work on their hay. Those who were unfortunate enough to have hay down during the last two weeks of gloomy weather welcomed the change in the weather this week.

It is reported that the Fred Baumbarger place, located about a mile south of Hebron center, on the Amston road, has been sold to an out of town buyer.

The Young Women's Club met at the home of Mrs. Mark Hills on Wednesday this week, the program being a historical one and including a visit to "Prophet's Rock," as it is known; this being the supposed scene of the first coming of the pioneer women to Hebron. According to tradition these women walked here from Windsor, to join their husbands, who had come here some months previous to make homes for their families. The women losing their bearings, and dusk coming on, they climbed to the top of the now historical rock and with their lusty screams brought their husbands to their assistance. The old historical graveyard on Burroughs Hill was also visited. Here are buried many of the former residents associated with the early history of the town.

The vacation school held at the Congregational church at Hebron Center for the past two weeks closed Friday afternoon with an exhibit of the work of the pupils and a pleasing program by the pupils, including a musical cantata, "The Story of Baby Moses." More than fifty children, mostly from Hebron Center and Gilead have attended the school. There has been an assembly each morning in the church, in which story telling has been a feature. The junior boys have been instructed in brass work and the junior girls in basketry, while the

primary classes have done scrap book work and other hand work. The work has been undenominational and a good community spirit has been shown. The Rev. John Deeter, pastor, has had charge of the project, and Mrs. Deeter and several other teachers have helped in class work.

Mrs. Frank Munsell is spending some time at the home of her brother, William Griffin.

Miss Marjorie Martin recently attended a library conference held at Portland, Maine. Miss Martin is librarian of the Dalton, Mass., public library.

Mrs. Lucy A. (Bliss) Richmond,

wife of Henry E. Richmond, died Thursday, June 28, at her home on Godfrey Hill, aged 74. She had been in ill health for some years.

BUT HE WON'T

Jones: I hear the head of the Diggenshew mining interests is going to retire.
Smith: Yes, he can afford to rest on his oars.—Life.

The radio is to be used largely in the presidential campaign. And with static what it is in summer, too!



2-Door Sedan \$1045 • Body by Fisher

**All-American Design
Is Advanced Design..**

For Example -

General Motors Research laboratories, Oakland engineering staff, General Motors Proving Ground. All working toward one end. Little wonder that All-American design is advanced design.

For example . . . it embodies the G-M-R cylinder head. It offers a whispering brute of an engine . . . 81 lb. crankshaft . . . AC fuel pump. Features combined in no other six of similar price.

When you buy an All-American Six you buy the product of three great engineering agencies devoted to progressive design. And you profit time and time again. In satisfaction . . . in consistent high value in justifiable owner pride.

Landau Coupe, \$1045; Sport Roadster, \$1075; Phaeton, \$1275; 4-Door Sedan, \$1145; Cabriolet, \$1155; Landau Sedan, \$1165. New Series Pontiac Six, \$745 to \$875. All prices at factory. Check Oakland-Pontiac delivered prices—they include lowest handling charges. General Motors Time Payment Plan available at minimum rate.

JAMES STEVENSON
53 BISSELL STREET, SOUTH MANCHESTER

**OAKLAND
ALL-AMERICAN SIX**
PRODUCT OF GENERAL MOTORS

**--and
NOW**

**The Reuben H. Donnelley
Corporation**

announces
the appearance
of a

CLASSIFIED SECTION

on yellow pages
bound into the
back of the

Manchester Telephone Directory

beginning with
the next issue

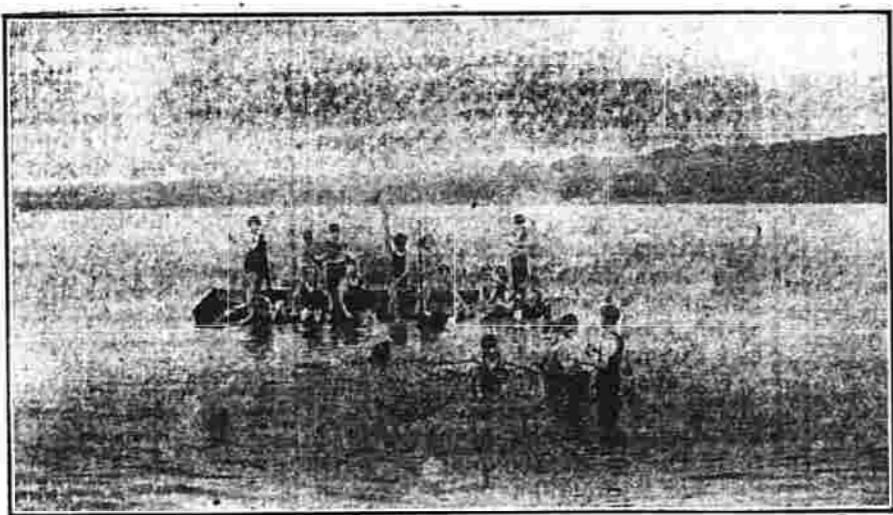
Use it for your convenience and profit when telephoning business concerns whose goods or services you require.

ANDOVER LAKE SHORE LOTS

ANDOVER LAKE IS ONE OF THE LARGEST LAKE DEVELOPMENTS IN EASTERN CONNECTICUT.

Located in the hills of Andover four hundred feet above sea level with approximately three hundred acres of spring and mountain stream water. Take State Road to Andover and follow the arrows.

Build A Summer Home and Enjoy Its Beauties



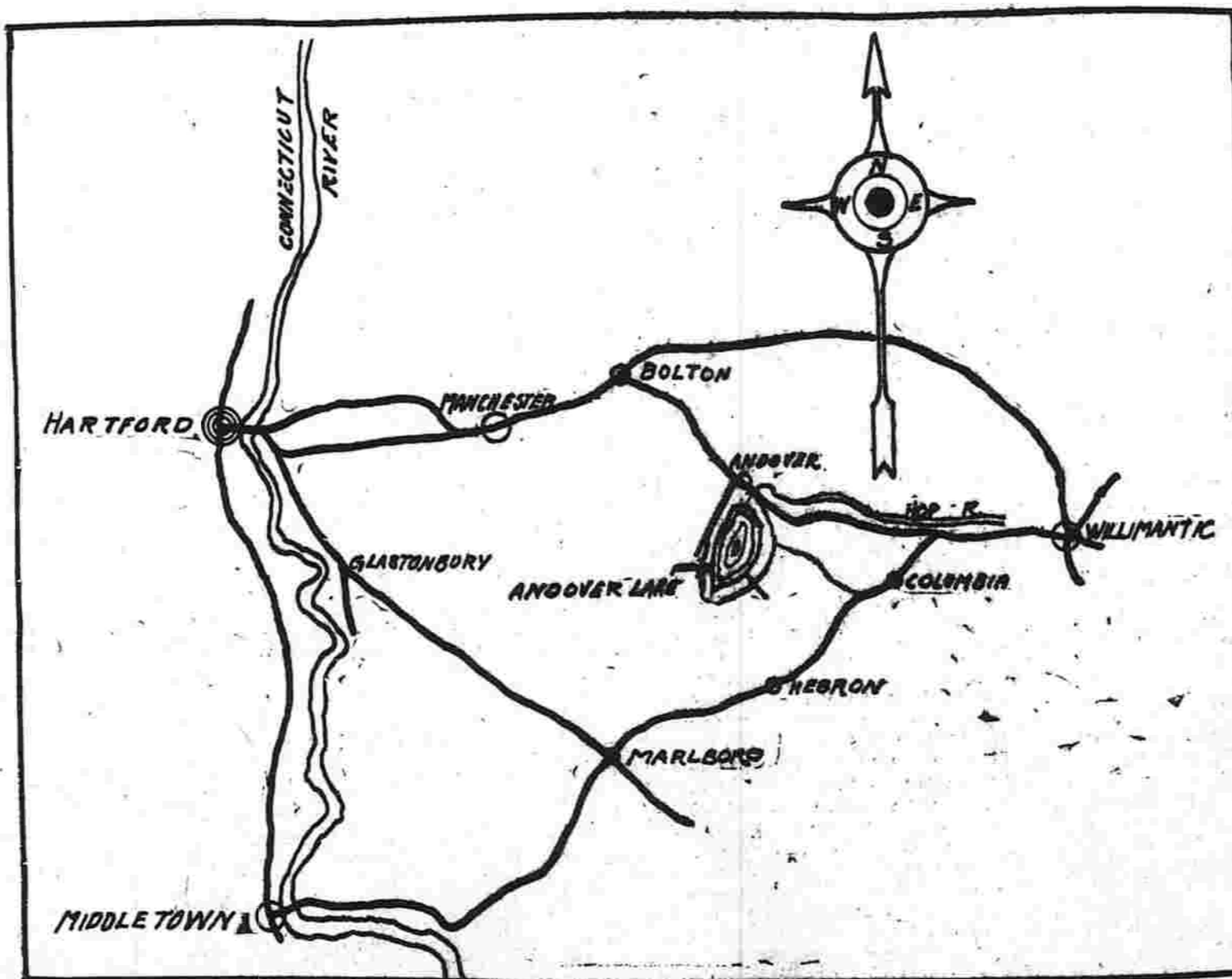
The Pleasure of the Water is Yours.

BATHING BOATING FISHING
Over 50 lots sold. Several cottages built or in process.

SEE IT FOR YOURSELF



Fernwood Cottage, Andover Lake.



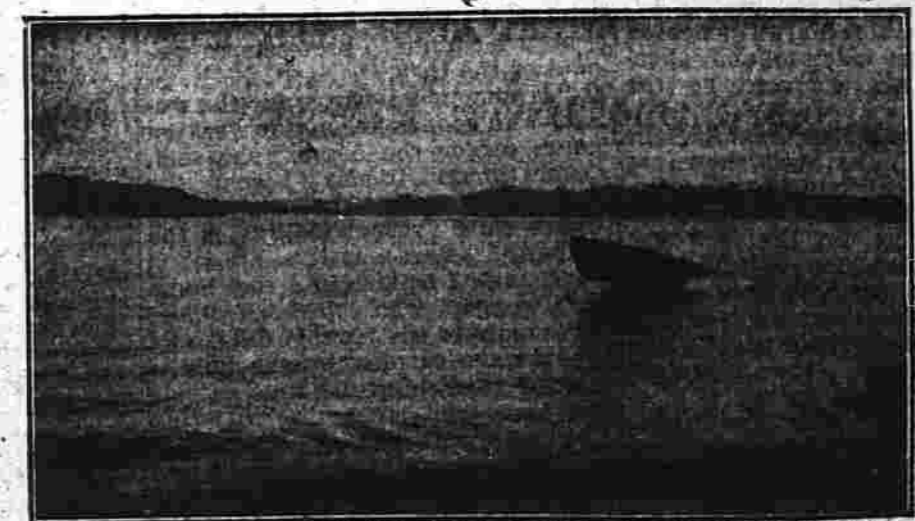
Where Andover Lake is Located.



Five Trout Caught in One of the Brooks.

LARGE LOTS WELL DRAINED
Sensible restrictions with sanitary precautions. Salesmen on duty at the property.

PRICES AND TERMS REASONABLE



Andover Lake—Looking North

THE ANDOVER LAKE CORPORATION, Owners

LATEST FASHION HINTS BY FOREMOST AUTHORITIES

THE HERALD'S HOME PAGE

FEATURE ARTICLES ABOUT INTERESTING WOMEN

When A Girl Loves

THIS HAS HAPPENED VIRGINIA BREWSTER is in love with NATHANIEL DANN, but she is afraid to tell him...

This And That In Feminine Lore

Is your wave natural or is it a permanent?—is the inquiry you'll evoke after securing a Nestle Circule wave at the L. Beauty parlor...

DEVELOPMENT OF YOUNG CHILDREN IS REGULAR

By Olive Roberts Barton To pay close attention to things that interest him From this time on his mental processes develop rapidly...

Daily Health Service HINTS ON HOW TO KEEP WELL by World Famed Authority

DR. FISHBEN ANALYZES MINERAL WATER VALUES By DR. MORRIS FISHBEN Editor of the Journal of the American Medical Association...

The WOMAN'S DAY by ALLENE SUMNER

If you're going to Europe this summer and if you hate and despise guide books, don't put the famous Clara Laughlin series in the same category of despised things...

Manchesther Herald Pattern Service. Pattern No. Price 15 Cents.

Fashion Plaque Pure Clean Best for Health J.H. HEWITT TUBERCULIN TESTED MILK

MARYE and MOM Their Letters

Dear Mom: After my last outburst, which must have stunned you somewhat, I am sure you will be relieved to have me be my frivolous self.

FRAMING of All Kinds Elite Studio 283 Main, Upstairs

MRS. ADA M. MERRIFIELD Teacher of Mandolin Tenor Banjo Ukulele Plectrum Banjo Mandolin Cello-Banjo Ensemble Playing for Advanced Pupils.

USE L. T. Wood's ICE because it PROTECTS baby's health MONUMENTS Gadella & Ambrosini Shop at East end of Bissell St. Telephone 1168-12

Let These Little Messengers Run Your Business Errands--They're Swift And Efficient

Want Ad Information
Manchester Evening Herald
Classified Advertisements
Count six average words to a line.

Announcements
STEAMSHIP TICKETS--all parts of the world. Ask for sailing lists and rates. Phone 750-2, Robert J. Smith, 1309 Main street.

Money to Loan
MONEY TO LOAN on mortgages. Mortgages bought and sold. P. D. Comello, 13 Oak street, telephone 1546.

Help Wanted--Female 35
WANTED--STENOGRAPHER refined young lady to work in cashiers department in local office of large industrial banking concern.

Help Wanted--Male 36
NINE EASY WAYS to start big money making business. Make \$10-\$35 daily. Space for full time--well known line of products--sample case free.

Wanted--Couple of good men for hoeing tobacco. H. Dudek, McNeill street, Oakland. Telephone Manchester 1345-5.

Wanted--Experienced sales-ladies at once. Apply 9-12 a. m. The Smart Shop, State Theater Building.

Wanted--Couple of good men for hoeing tobacco. H. Dudek, McNeill street, Oakland. Telephone Manchester 1345-5.

Phone Your Want Ads
To The Evening Herald
Call 664
And Ask for "Bee"
Tell Her What You Want

Telephone Your Want Ads
Ads accepted over the telephone at the CHARGE RATE given above as a convenience to advertisers.

Garages--Service--Storage 10
TO RENT--GARAGE--18 Griswold street.

Garages--Service--Storage 10
TO RENT--GARAGE--18 Griswold street.

Household Goods 51
NOW IS THE TIME TO THINK OF YOUR LIVING ROOM

Rooms Without Board 50
THREE UNFURNISHED ROOMS for light housekeeping. Also furnished.

Rooms Without Board 50
THREE UNFURNISHED ROOMS for light housekeeping. Also furnished.

Rooms Without Board 50
THREE UNFURNISHED ROOMS for light housekeeping. Also furnished.

Rooms Without Board 50
THREE UNFURNISHED ROOMS for light housekeeping. Also furnished.

Index of Classifications
Evening Herald Want Ads are now grouped according to classifications appearing in the numerical order indicated.

Index of Classifications
Evening Herald Want Ads are now grouped according to classifications appearing in the numerical order indicated.

Index of Classifications
Evening Herald Want Ads are now grouped according to classifications appearing in the numerical order indicated.

Index of Classifications
Evening Herald Want Ads are now grouped according to classifications appearing in the numerical order indicated.

Index of Classifications
Evening Herald Want Ads are now grouped according to classifications appearing in the numerical order indicated.

Index of Classifications
Evening Herald Want Ads are now grouped according to classifications appearing in the numerical order indicated.

Index of Classifications
Evening Herald Want Ads are now grouped according to classifications appearing in the numerical order indicated.

Index of Classifications
Evening Herald Want Ads are now grouped according to classifications appearing in the numerical order indicated.

Index of Classifications
Evening Herald Want Ads are now grouped according to classifications appearing in the numerical order indicated.

Index of Classifications
Evening Herald Want Ads are now grouped according to classifications appearing in the numerical order indicated.

Index of Classifications
Evening Herald Want Ads are now grouped according to classifications appearing in the numerical order indicated.

Index of Classifications
Evening Herald Want Ads are now grouped according to classifications appearing in the numerical order indicated.

Index of Classifications
Evening Herald Want Ads are now grouped according to classifications appearing in the numerical order indicated.

Index of Classifications
Evening Herald Want Ads are now grouped according to classifications appearing in the numerical order indicated.

Index of Classifications
Evening Herald Want Ads are now grouped according to classifications appearing in the numerical order indicated.

Index of Classifications
Evening Herald Want Ads are now grouped according to classifications appearing in the numerical order indicated.

GAS BUGGIES--Explain Yourself, Alec!
THE EXCITEMENT FOLLOWING ALEC'S DISAPPEARANCE WAS NOTHING COMPARED TO THAT WHICH GREETED HIS RETURN.

GAS BUGGIES--Explain Yourself, Alec!
THE EXCITEMENT FOLLOWING ALEC'S DISAPPEARANCE WAS NOTHING COMPARED TO THAT WHICH GREETED HIS RETURN.

GAS BUGGIES--Explain Yourself, Alec!
THE EXCITEMENT FOLLOWING ALEC'S DISAPPEARANCE WAS NOTHING COMPARED TO THAT WHICH GREETED HIS RETURN.

GAS BUGGIES--Explain Yourself, Alec!
THE EXCITEMENT FOLLOWING ALEC'S DISAPPEARANCE WAS NOTHING COMPARED TO THAT WHICH GREETED HIS RETURN.

GAS BUGGIES--Explain Yourself, Alec!
THE EXCITEMENT FOLLOWING ALEC'S DISAPPEARANCE WAS NOTHING COMPARED TO THAT WHICH GREETED HIS RETURN.

GAS BUGGIES--Explain Yourself, Alec!
THE EXCITEMENT FOLLOWING ALEC'S DISAPPEARANCE WAS NOTHING COMPARED TO THAT WHICH GREETED HIS RETURN.

GAS BUGGIES--Explain Yourself, Alec!
THE EXCITEMENT FOLLOWING ALEC'S DISAPPEARANCE WAS NOTHING COMPARED TO THAT WHICH GREETED HIS RETURN.

GAS BUGGIES--Explain Yourself, Alec!
THE EXCITEMENT FOLLOWING ALEC'S DISAPPEARANCE WAS NOTHING COMPARED TO THAT WHICH GREETED HIS RETURN.

THE EXCITEMENT FOLLOWING ALEC'S DISAPPEARANCE WAS NOTHING COMPARED TO THAT WHICH GREETED HIS RETURN.

THE EXCITEMENT FOLLOWING ALEC'S DISAPPEARANCE WAS NOTHING COMPARED TO THAT WHICH GREETED HIS RETURN.

THE EXCITEMENT FOLLOWING ALEC'S DISAPPEARANCE WAS NOTHING COMPARED TO THAT WHICH GREETED HIS RETURN.

THE EXCITEMENT FOLLOWING ALEC'S DISAPPEARANCE WAS NOTHING COMPARED TO THAT WHICH GREETED HIS RETURN.

THE EXCITEMENT FOLLOWING ALEC'S DISAPPEARANCE WAS NOTHING COMPARED TO THAT WHICH GREETED HIS RETURN.

THE EXCITEMENT FOLLOWING ALEC'S DISAPPEARANCE WAS NOTHING COMPARED TO THAT WHICH GREETED HIS RETURN.

THE EXCITEMENT FOLLOWING ALEC'S DISAPPEARANCE WAS NOTHING COMPARED TO THAT WHICH GREETED HIS RETURN.

THE EXCITEMENT FOLLOWING ALEC'S DISAPPEARANCE WAS NOTHING COMPARED TO THAT WHICH GREETED HIS RETURN.

ASKS FOR RECEIVER FOR HARDWARE STORE
The hardware concern at 691 Main street, known as the Bamforth Brothers Hardware Company, but which last December incorporated under the name of the Bamforth & Co. Company, Inc. is in financial difficulties and a petition for a temporary receiver has been made by Frank H. Bullard, secretary of the company, asking that Judge Wolfe of the New Haven County Superior Court appoint a temporary receiver. There will be a hearing on the petition in New Haven on Monday.

ODD FELLOWS HONOR DEAD OF THE YEAR
King David Lodge No. 31, Independent Order of Odd Fellows, held its annual memorial service at the Odd Fellows block last night. Shepherd Encampment and Sunset Rebecca Lodge were guests.

Local Auto Dealers' Recent Deliveries
Madden Brothers, local Nash dealers report the delivery of one of the new '490' series standing six coupe to Mrs. Michael J. Moriarty of East Center street. They also delivered a Nash four door sedan to Miss Hannah Ahearn of Bond street.

GARDEN CLUB CARES FOR TOWN HALL BULBS
Former Park Commissioner J. Y. Keay before leaving Manchester planted a large number of tulip bulbs about the front and sides of the Municipal building. The bulbs were some that he had obtained from Holland and paid for with his own money.

ST. MARY'S CLUB GOES TO LAKE POCOTPAUG
The annual outing of the St. Mary's Young Men's Club this afternoon at Lake Pocotpaug, East Hampton, promises to be the most successful in years.

CHANGES IN BEATS
Tomorrow being July 1 there will be a change in beats of the members of the Manchester police force. The lower Main street beat will be taken for the Month of July by Officer Martin, the Center and upper Main street beat by Officer Galligan; north end, Michael Fitzgerald; West Side, Motorcycle Officer Roberts; Spruce street, Officer Pringle; Cheney Brothers beat, Officers Donaldson and Wisley; day beats, Officers Wirtalla and McGlinn; station, Chief Gordon, Captain Schendel, Lieutenant Barrow and Sergeant Crockett.

COVENTRY
Mrs. Charles Christensen has organized a Junior 4-H canning club. The following officers were elected: President, Betty Blackburn; secretary, Gladys McKinney; treasurer, William Blackburn; recorder, Joseph Heckler. The club will meet every Tuesday during the summer. Strawberries will be canned next Tuesday.

COVENTRY
Mrs. Charles Christensen has organized a Junior 4-H canning club. The following officers were elected: President, Betty Blackburn; secretary, Gladys McKinney; treasurer, William Blackburn; recorder, Joseph Heckler. The club will meet every Tuesday during the summer. Strawberries will be canned next Tuesday.

COVENTRY
Mrs. Charles Christensen has organized a Junior 4-H canning club. The following officers were elected: President, Betty Blackburn; secretary, Gladys McKinney; treasurer, William Blackburn; recorder, Joseph Heckler. The club will meet every Tuesday during the summer. Strawberries will be canned next Tuesday.

COVENTRY
Mrs. Charles Christensen has organized a Junior 4-H canning club. The following officers were elected: President, Betty Blackburn; secretary, Gladys McKinney; treasurer, William Blackburn; recorder, Joseph Heckler. The club will meet every Tuesday during the summer. Strawberries will be canned next Tuesday.

COVENTRY
Mrs. Charles Christensen has organized a Junior 4-H canning club. The following officers were elected: President, Betty Blackburn; secretary, Gladys McKinney; treasurer, William Blackburn; recorder, Joseph Heckler. The club will meet every Tuesday during the summer. Strawberries will be canned next Tuesday.

COVENTRY
Mrs. Charles Christensen has organized a Junior 4-H canning club. The following officers were elected: President, Betty Blackburn; secretary, Gladys McKinney; treasurer, William Blackburn; recorder, Joseph Heckler. The club will meet every Tuesday during the summer. Strawberries will be canned next Tuesday.

COVENTRY
Mrs. Charles Christensen has organized a Junior 4-H canning club. The following officers were elected: President, Betty Blackburn; secretary, Gladys McKinney; treasurer, William Blackburn; recorder, Joseph Heckler. The club will meet every Tuesday during the summer. Strawberries will be canned next Tuesday.

COVENTRY
Mrs. Charles Christensen has organized a Junior 4-H canning club. The following officers were elected: President, Betty Blackburn; secretary, Gladys McKinney; treasurer, William Blackburn; recorder, Joseph Heckler. The club will meet every Tuesday during the summer. Strawberries will be canned next Tuesday.

COVENTRY
Mrs. Charles Christensen has organized a Junior 4-H canning club. The following officers were elected: President, Betty Blackburn; secretary, Gladys McKinney; treasurer, William Blackburn; recorder, Joseph Heckler. The club will meet every Tuesday during the summer. Strawberries will be canned next Tuesday.

COVENTRY
Mrs. Charles Christensen has organized a Junior 4-H canning club. The following officers were elected: President, Betty Blackburn; secretary, Gladys McKinney; treasurer, William Blackburn; recorder, Joseph Heckler. The club will meet every Tuesday during the summer. Strawberries will be canned next Tuesday.

COVENTRY
Mrs. Charles Christensen has organized a Junior 4-H canning club. The following officers were elected: President, Betty Blackburn; secretary, Gladys McKinney; treasurer, William Blackburn; recorder, Joseph Heckler. The club will meet every Tuesday during the summer. Strawberries will be canned next Tuesday.

COVENTRY
Mrs. Charles Christensen has organized a Junior 4-H canning club. The following officers were elected: President, Betty Blackburn; secretary, Gladys McKinney; treasurer, William Blackburn; recorder, Joseph Heckler. The club will meet every Tuesday during the summer. Strawberries will be canned next Tuesday.

COVENTRY
Mrs. Charles Christensen has organized a Junior 4-H canning club. The following officers were elected: President, Betty Blackburn; secretary, Gladys McKinney; treasurer, William Blackburn; recorder, Joseph Heckler. The club will meet every Tuesday during the summer. Strawberries will be canned next Tuesday.

COVENTRY
Mrs. Charles Christensen has organized a Junior 4-H canning club. The following officers were elected: President, Betty Blackburn; secretary, Gladys McKinney; treasurer, William Blackburn; recorder, Joseph Heckler. The club will meet every Tuesday during the summer. Strawberries will be canned next Tuesday.

COVENTRY
Mrs. Charles Christensen has organized a Junior 4-H canning club. The following officers were elected: President, Betty Blackburn; secretary, Gladys McKinney; treasurer, William Blackburn; recorder, Joseph Heckler. The club will meet every Tuesday during the summer. Strawberries will be canned next Tuesday.

COVENTRY
Mrs. Charles Christensen has organized a Junior 4-H canning club. The following officers were elected: President, Betty Blackburn; secretary, Gladys McKinney; treasurer, William Blackburn; recorder, Joseph Heckler. The club will meet every Tuesday during the summer. Strawberries will be canned next Tuesday.

COVENTRY
Mrs. Charles Christensen has organized a Junior 4-H canning club. The following officers were elected: President, Betty Blackburn; secretary, Gladys McKinney; treasurer, William Blackburn; recorder, Joseph Heckler. The club will meet every Tuesday during the summer. Strawberries will be canned next Tuesday.

COVENTRY
Mrs. Charles Christensen has organized a Junior 4-H canning club. The following officers were elected: President, Betty Blackburn; secretary, Gladys McKinney; treasurer, William Blackburn; recorder, Joseph Heckler. The club will meet every Tuesday during the summer. Strawberries will be canned next Tuesday.

COVENTRY
Mrs. Charles Christensen has organized a Junior 4-H canning club. The following officers were elected: President, Betty Blackburn; secretary, Gladys McKinney; treasurer, William Blackburn; recorder, Joseph Heckler. The club will meet every Tuesday during the summer. Strawberries will be canned next Tuesday.

COVENTRY
Mrs. Charles Christensen has organized a Junior 4-H canning club. The following officers were elected: President, Betty Blackburn; secretary, Gladys McKinney; treasurer, William Blackburn; recorder, Joseph Heckler. The club will meet every Tuesday during the summer. Strawberries will be canned next Tuesday.

COVENTRY
Mrs. Charles Christensen has organized a Junior 4-H canning club. The following officers were elected: President, Betty Blackburn; secretary, Gladys McKinney; treasurer, William Blackburn; recorder, Joseph Heckler. The club will meet every Tuesday during the summer. Strawberries will be canned next Tuesday.

COVENTRY
Mrs. Charles Christensen has organized a Junior 4-H canning club. The following officers were elected: President, Betty Blackburn; secretary, Gladys McKinney; treasurer, William Blackburn; recorder, Joseph Heckler. The club will meet every Tuesday during the summer. Strawberries will be canned next Tuesday.

COVENTRY
Mrs. Charles Christensen has organized a Junior 4-H canning club. The following officers were elected: President, Betty Blackburn; secretary, Gladys McKinney; treasurer, William Blackburn; recorder, Joseph Heckler. The club will meet every Tuesday during the summer. Strawberries will be canned next Tuesday.

COVENTRY
Mrs. Charles Christensen has organized a Junior 4-H canning club. The following officers were elected: President, Betty Blackburn; secretary, Gladys McKinney; treasurer, William Blackburn; recorder, Joseph Heckler. The club will meet every Tuesday during the summer. Strawberries will be canned next Tuesday.

By Percy L. Crosby

FLAPPER FANNY SAYS:



If you want to hold your own in puppy love, invest in a dog.

SENSE and NONSENSE

On Prohibition
Young folks of today, seem to think it quite gay. To break prohibition laws; Vile corn whiskey they sip, from a flask on the hip.

LETTER GOLF

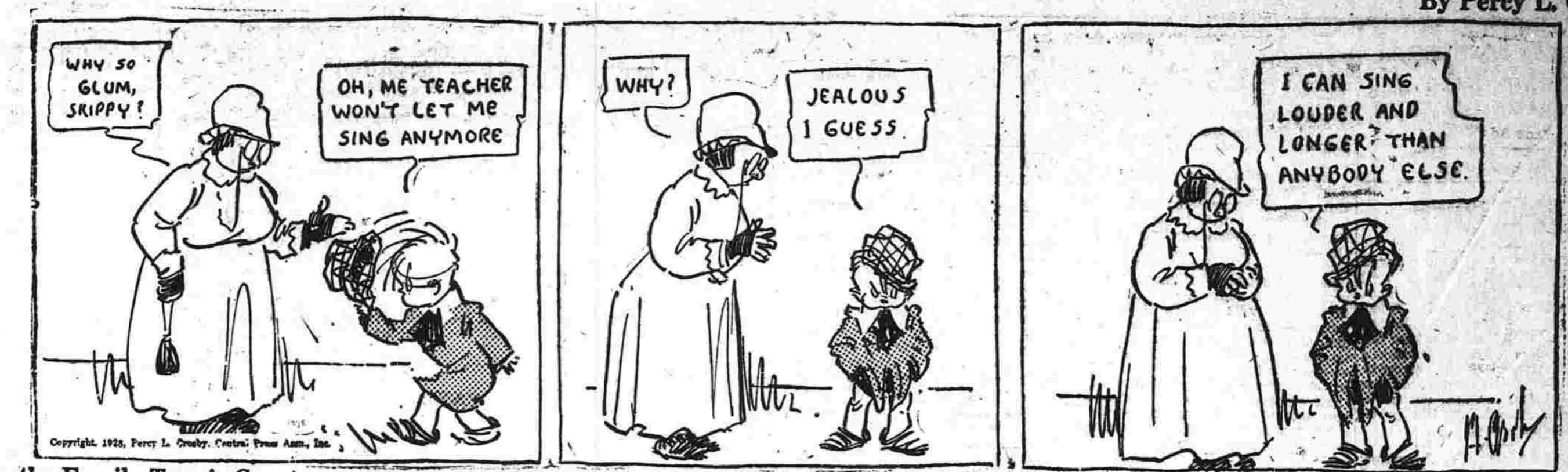
EASY TO MAKE
It's easy to have a HAND MADE puzzle—just work today's round of letter golf. Par is four and one solution is on another page.

Handmade puzzle grid with letters H, A, N, D, M, A, D, E.

THE RULES
1—The idea of letter golf is to change one word to another and do it in par, a given number of strokes. Thus to change COW to HEN, in three strokes, COW, HOW, HEW, HEN.

Keep this fact in mind, if you are inclined, To sample corn moonshine, or rye. Some labels tell you what is perfectly true, But the labels on moonshine, they lie.

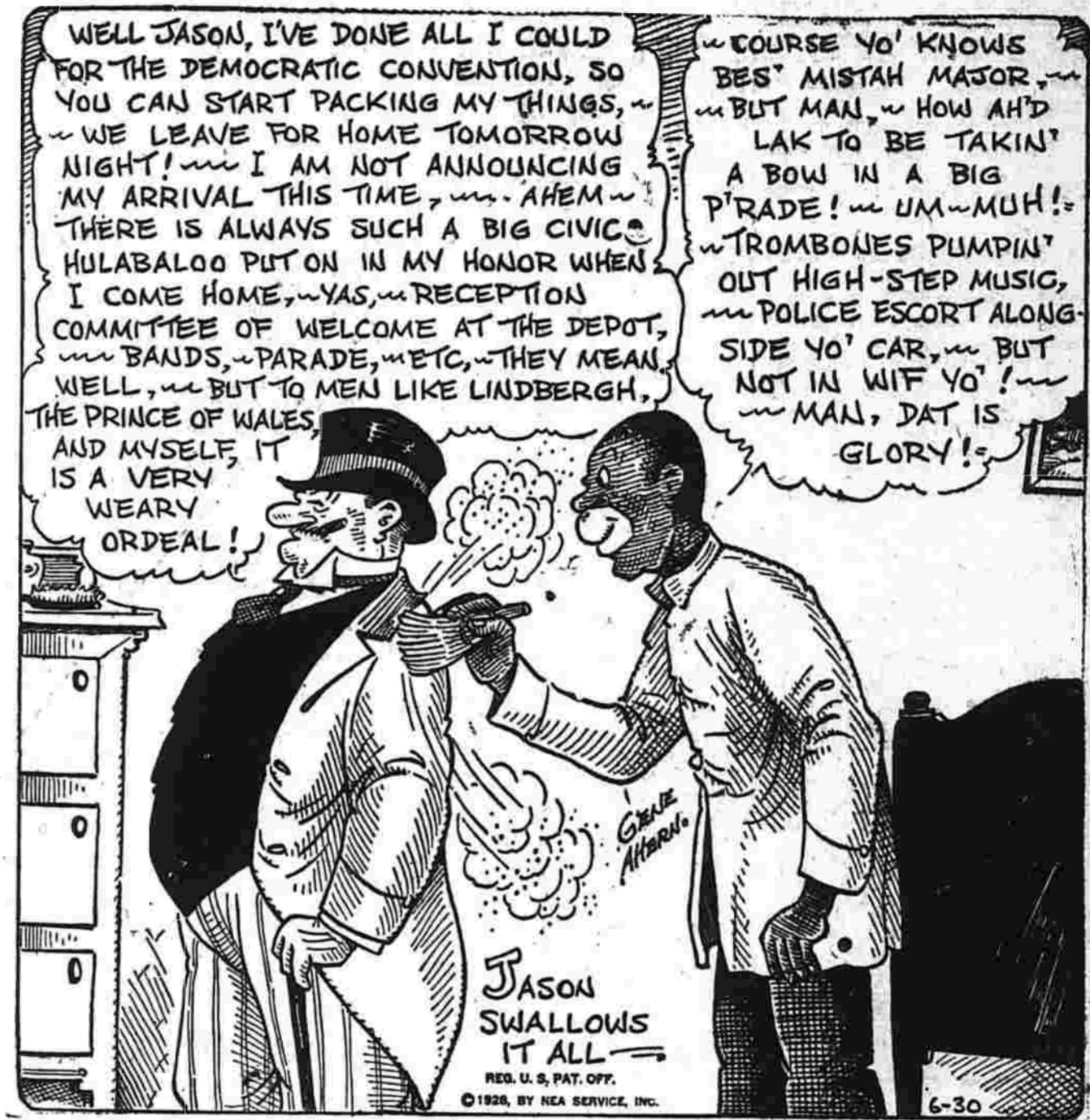
SKIPPY



On the Family Tennis Court

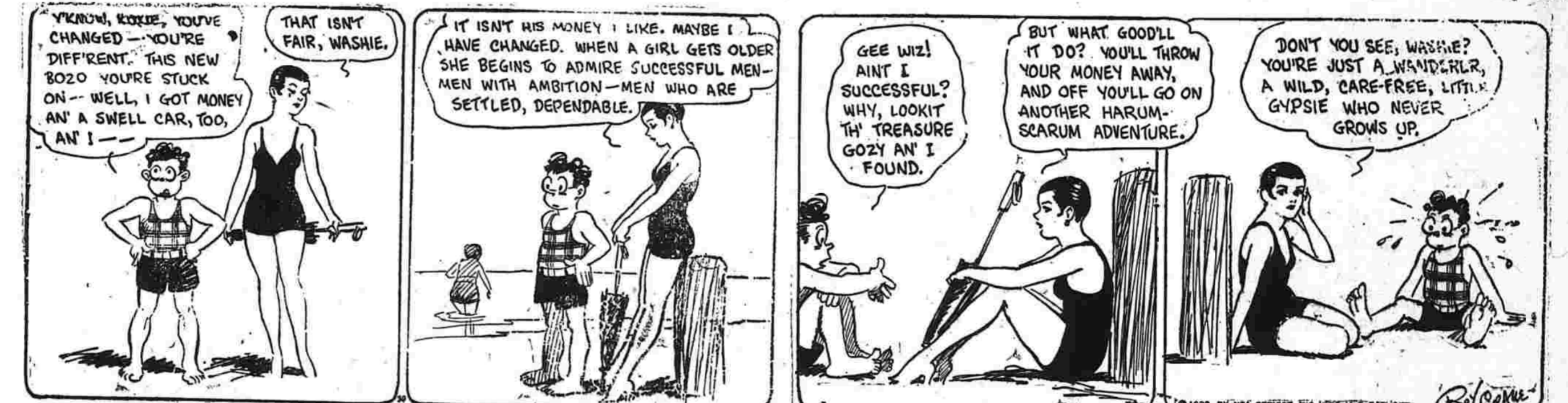
By Fontaine Fox

OUR BOARDING HOUSE By Gene Ahern



WASHINGTON TUBBS II

By Crane



THE TINYMITES



READ THE STORY, THE N COLOR THE PICTURE
While all the tired out Tinies slept, a very careful watch was kept by several little monkeys who were quiet as could be.

FRECKLES AND HIS FRIENDS

A Surprise

By Blosser



SALESMAN SAM

Two Cases of Blues

By Small



Dance and Entertainment

BOLTON HALL SATURDAY EVG. JUNE 30 8:30 Daylight Time Behrend's Orchestra. Admission 50 cents

ABOUT TOWN

The fracture of an arm suffered by Capt. Joel M. Nichols, well known Depot Square newsdealer, on Thursday, proved under X-ray observation to be a complicated one, extending to and involving the elbow. Captain Nichols was taken to the Hartford hospital, yesterday where the fracture was reduced by a specialist and the arm put in a plaster cast. The injury is a particularly painful one.

The Manchester Construction Company has practically completed a new house on Washington street for Arthur A. Knoft. It is ready for plastering.

Mrs. Charles E. Richmond of 65 Spruce street received word yesterday of the sudden death of her sister, Mrs. Lilley Lemoine, in Waterville, Me. Mrs. Richmond received a letter only a few days ago from Mrs. Lemoine stating that she was feeling exceptionally well. It is believed that she died of a heart attack. She was 69 years old.

The former Princess theater building located on Birch street was sold today to Clifford Squires of Plainfield, Conn. Mr. Squires purchased the block from Herbert Fortune, local painting contractor and gave in part payment for it his 200 acre farm, 40 head of cattle and 800 chickens, in Plainfield, Mr. Squires is moving into the block today and Mr. Fortune is moving to the Squires farm. The transaction was completed by Wallace Robb.

Mr. and Mrs. Clarence P. Quimby will leave on Tuesday, by automobile, for Turner, Me., where they will spend the month of July with relatives.

Superintendent and Mrs. F. A. Verplanck were planning to leave today for a week's automobile tour in the Adirondack Mountains.

Word has been received of the marriage of Elmer Taylor, Manchester High School teacher, and Miss Mary Poland of Putney, Vt. In Putney, Mrs. Taylor was also a school teacher, being employed in Bernardston, Mass. Mr. and Mrs. Taylor will make their home here next fall.

Mrs. Fannie Smith of Cambridge street and Miss Edith Pearson, local teachers, will attend the Yale summer school.

All members of the Girls' Friendly Society of the St. Mary's Episcopal Church are requested to attend the Sunday morning church service tomorrow because immediately afterward the members will gather outside in a group to be photographed.

Posters painted by school children for the Manchester Garden club's flower show recently held at Center church will be on exhibition at the special meeting of the club called for Monday evening at the Manchester Community club-house. A set of seven large photographs taken while the exhibit was in progress will also be displayed. Some of the members have purchased entire sets and orders will be received for additional pictures at the coming meeting. Committee chairmen are expected to make their reports, bills will be approved and any other business transacted at a there will be no business meeting during July and August.

Dr. Thomas G. Sloan of Park street, has returned to town after a motor tour which extended as far north as Canada and south to Pennsylvania.

Dr. and Mrs. Charles W. Strant of Henery street, leave today for an auto trip through the White Mountains and Maine, returning by the shore route. They plan to return to town the day after the Fourth. Their friends, Dr. and Mrs. Charles Farrell of Providence, will accompany them on the tour.

Mr. and Mrs. Walter Walsh of Washington street and Miss Viola Greenaway left early this morning for Boston to spend the week-end at places of interest in that vicinity.

Miss Florence Ford, Miss Ethel Brown and Raymond Johnson leave today for Pleasant View, R. I., and will spend their vacation at the Yolanda cottage.

Mrs. W. E. Hibbard of North Main street returned today after spending a week at her cottage at Black Point.

Rev. and Mrs. E. P. Phreaner of Woodbridge street will spend the next two weeks at the Hibbard cottage at Black Point.

Mr. and Mrs. E. L. G. Hohenthal, Sr., are leaving today for their cottage at Grove Beach where Mrs. Hohenthal will spend July and August. Mr. Hohenthal will return Monday evening to attend the meeting of the board of directors of the Connecticut Temperance Union at the Y. M. O. A. Hartford Tuesday morning at 11. He will spend the Fourth at the shore.

Miss Gertrude E. Berggren of New York City and this town will be heard over station WOR, Newark, N. J., from 2:45 to 3 o'clock this afternoon in solo work.

S. M. E. AND CENTER JOIN FOR UNION SERVICES

Big South End Churches to Continue Summer Custom of Recent Years.

Following a custom established several years ago the Center Congregational Church and the South Methodist Episcopal Church will combine again this summer for the purpose of holding Union Services. During July Rev. Robert A. Colpitts of the South Methodist Episcopal Church will conduct the union services at the Center Congregational Church. He will preach on the following topics: July 16, "Prisoners of Prophecy"; July 18, "Arrivals"; July 22, "Crown or Cup"; July 29, "Watching for the Dawn."

The union services will be held at the South Methodist Church during the month of August. These services will be in charge of the following: August 5, Elmer Thienes of Marlborough, general secretary of the Hartford County Y. M. O. A.; August 12, Rev. Lawrence L. Barber of the Pilgrim Congregational Church, Nashua, N. H.; August 19, Rev. Dorrance B. Lathrop of the People's Baptist Church, Auburn, R. I.; August 26, Rev. Eric I. Lindh of the Bethany Congregational Church, Quincy, Mass. During the month of July Rev. Mr. Colpitts will have charge of the parish duties of both churches while Rev. Watson Woodruff will assume the same duties during the month of August. The union services have proved popular with members of both parishes in the past.

MANY WINDOWS BANG AGAINST NIGHT STORM

The storm that broke last night at 12:45 was accompanied by such a high wind that there were few Manchester people who had left their windows open who were not called out of bed to shut them to prevent flooding their rooms. Reports at the police station show that this storm, which with its wind, continued for an hour, and that another and separate storm started at 2:15 and continued until shortly after 4 o'clock. This was not accompanied by much wind.

Manchester Auto Top Co. We Feature Sport Model Auto Tops Slip Covers Carpets for All Cars

No job too big or small. We can do any job from the chassis up. All work fully guaranteed. W. J. MESSIER Cor. Center St. and Henderson Road Phone 1816-3

R. W. Joyner Contractor and Builder

Alteration and Repair Work Given Prompt Attention. Residence 71 Pitkin Street. South Manchester. Phone

RUSSELLS CELEBRATE 25TH ANNIVERSARY

Relatives and Friends Gather at Maple Street Home to Observe Silver Wedding.

Mr. and Mrs. Thomas Russell of 169 Maple street were pleasantly surprised last night by a party of relatives, friends and neighbors who came to assist them in observing their twenty-fifth wedding anniversary. Among the guests were their cousins, Mr. and Mrs. W. A. Kapp of New York City, who are spending a few days with them.

A number of the young women present staged a mock wedding party which caused no end of fun. Songs popular 25 years ago were sung in chorus and another interesting feature was the recitation of the poem "Kite" by Mr. Russell, who memorized it when a schoolboy and remembered it perfectly. A delicious lunch provided by the guests was served and Mr. and Mrs. Russell were remembered by many gifts in silver.

Sunset Rebekah Lodge will hold its regular meeting in Odd Fellows hall Monday evening. District Deputy Miss Mary Hutchinson will make her official visit. It was voted to hold only one meeting night in July and no meeting will take place on the 16th. A social time with refreshments will follow the business. The committee is Mrs. Etta Loveland, Mrs. Ellenor Rogers and Mrs. Ida Dart.

Look! ...the NEW "WATCH-THIN" BELL & HOWELL Filme 75 SEE the new Bell & Howell movie camera that operates easily in one hand. "Watch-thin" compared with all others. Bell & Howell quality of pictures now available in a camera costing one-third less than the world-famous Filme 70. Movies can now be yours. Come in. Get details.

Joseph C. Wilson Plumbing and Heating 28 Spruce St., Phone 641

WATKINS BROTHERS Funeral Directors Robert K. Anderson Phone 908 or 748-1

SUNDAY DINNER at the HOTEL SHERIDAN Turkey, Duck or Chicken with all the fixings, \$1

If You Want to Sell or Rent Quickly We Suggest That You Let Us Remodel The Plumbing -you'll find it one of the greatest features in helping make the sale.

Holmes Funeral Parlors 251 S. Main Street Phone Day 406-2

PHONES Pinehurst "GOOD THINGS TO EAT" POLITICS. Now that Hoover has been nominated by the Republicans and Smith has been nominated by the Democrats, Pinehurst is prepared to express its opinion as to who will be the next President of the United States. It will be either Hoover or Smith. This may not sound particularly brilliant but it has a bit of underlying sense. It means that this is the beginning and the end of political discussion so far as Pinehurst is concerned. We set it down here, as that, so that our customers will understand it to be a matter of fixed policy, in this store, not to talk politics at all. Politics and the retail trade mix about as well as booze and gasoline. Every Pinehurst employee has his own political convictions—at least we hope so. But in business hours he keeps them to himself. Political discussion is essential to good citizenship—but there is a right time and plenty of right places for it. In a store it doesn't work. Hence the above tip. None of us here is afraid to let his views be known. We simply know that it's bad for business and bad for tempers and bad for digestions to get into political controversies—and part of Pinehurst's job is to take care of its customers' digestions. So please know that we think it will be either Smith or Hoover—and call it politically, a day. STORE OPEN UNTIL 9 O'CLOCK TONIGHT

Bedding Plants Make your home grounds more attractive with blooming plants. Our plants are well started in pots and will supply you with cut flowers in a short while. Select yours from this list. Geraniums Coleus Petunias Rose Geraniums Marigolds Dwarf Cannas. Verbena Fuchias Snapdragon Lobelia Heliotrope Begonia Stock Now is the right time to set out celery plants. We have plenty of real good plants. Cut Flowers for all occasions. Anderson Greenhouses 153 Eldridge St. Phone 2124

We Are Here To Give You REAL SERVICE Plan on having your car greased and oil changed before the Fourth. Three service pits, seven service men. Marland Super Motor Oil Distributors Goodyear Tires—Hood Tires Exide Batteries Try Us for Price Flat Tire Battery Trouble Out of Gas Grease Job Call 1551, We Will Take Care of You. CAMPBELL'S FILLING STATION MOTOR OIL GASOLINE Corner Main and Middle Turnpike

While on your vacation Leave Valuables in Our Vault Avoid the risk of loss by burglary or fire during your absence. For a small charge you can leave silverware, jewelry and other valuables safely deposited in our vault. THE MANCHESTER TRUST COMPANY South Manchester, Conn.

Low Priced and Reliable Both Real Federals FEDERAL WISCONO FEDERAL TRAFFIX Are you interested in low priced tires? No need to send out of town for them. No need to buy unknown brands or a "gyp" tire. FEDERAL makes the Wiscono and Traffix expressly for the man who must consider the initial cost of his equipment. But every Federal tire must measure up to the Federal standard—plus mileage for your money. Stop in and let us match our quality and low prices against any tire you are thinking of buying. It will only take you a minute. Isn't it worth it to save yourself money and possible troubles? TIRES ON CREDIT Buy your tires on our easy payment plan. Terms as low as \$1.00 down. Terms to suit you on the balance. BATTERIES! BATTERIES! AUTOMOBILE RADIO 18 PLATE 18 PLATE 15 PLATE 15 PLATE DODGE DODGE 1 Year 1 Year Heavy Duty Heavy Duty 12-16 Volt 12-16 Volt Guarantee 2 Year Guar. 1 Year 2 Year \$7.90 \$10.90 \$10.90 \$14.90 \$14.90 \$16.90 SPECIAL TIRE PRICES FOR SATURDAY AND SUNDAY 30x3 1/2 30x3 1/2 29x4.45 30x3 1/2 30x3 1/2 29x4.45 FEDERAL FEDERAL FEDERAL FEDERAL CORDS Overize BALLOON Guaranteed OVERSIZE Guaranteed \$4.45 \$4.95 \$5.95 \$3.45 \$3.95 \$4.45 Other sizes at special prices. Call 1284 or 2034. Oaklyn Filling Station ALEXANDER COLE 367 Oakland St. Manchester 93 Center St. South Manchester Where You Can Buy Good Merchandise at the Lowest Prices Herald Advertising Pays--Use It